

ITEMS 6-7-8 & 11 ARE 1/8" SHEET. FORMER 1 & ITEM 12 ARE 1/16" PLY. ALL OTHER FORMERS ARE 1/16" SHEET Balsa

ALL FUSELAGE SPACERS & LONGERONS MADE FROM 1/8" SQ. Balsa. TOP & SIDE STRINGERS MADE FROM 1/16" x 1/8" STRIP SANDED TO SUIT SECTION.

MAKE BALANCE WEIGHT FROM SCRAP Balsa

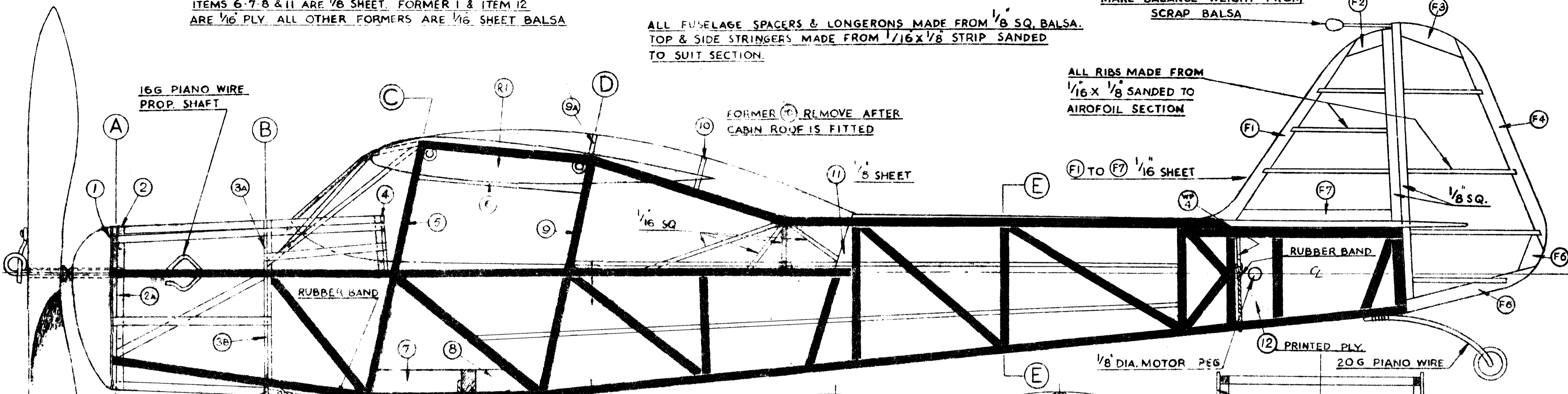
ALL RIBS MADE FROM 1/16" x 1/8" SANDED TO AEROFOIL SECTION

FORMER (10) REMOVE AFTER CABIN ROOF IS FITTED

(F1) TO (F7) 1/16" SHEET

(11) 1/8" SHEET

16G PIANO WIRE PROP. SHAFT

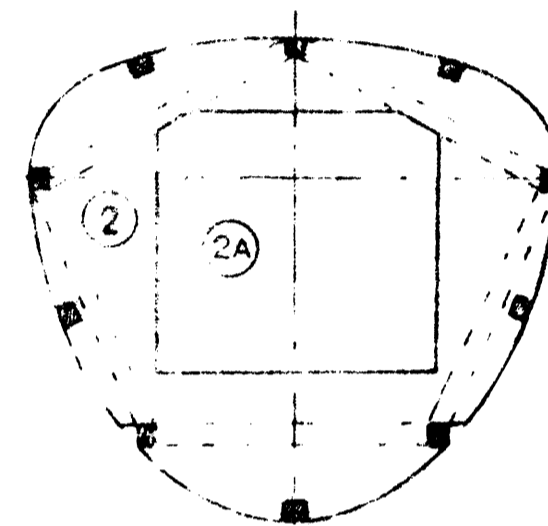


NICK LONGERONS & DIAGONALS AT THIS POINT WITH RAZOR BLADE TO FACILITATE BENDING

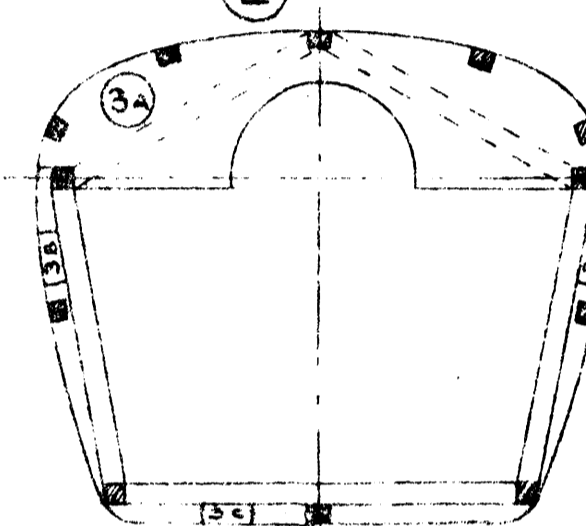
ALL STRINGERS FROM FORMER (1) TO FORMER (4) ARE 1/8" SQ.

(3) 1/16" SHEET

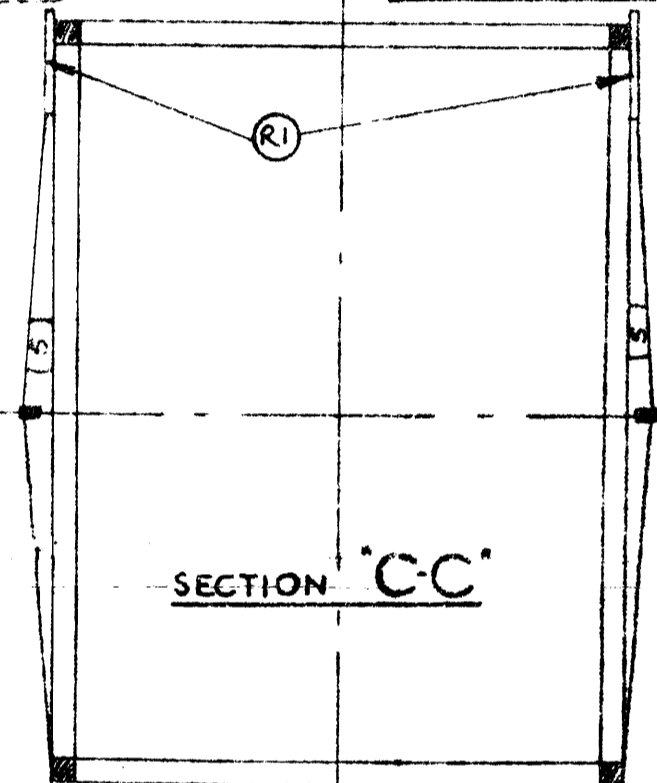
PAPER TUBING 1/8" WING PEGS



SECTION A-A



SECTION B-B



SECTION C-C

MAKE TAILWHEEL FROM 1/16" PLY PARTS

1/8" DIA. MOTOR PEG

(2) PRINTED PLY.

20G PIANO WIRE

THIS SPACER 1/8" x 1/4"

COVER FRONT & TOP HERE WITH PRINTED CARD PARTS

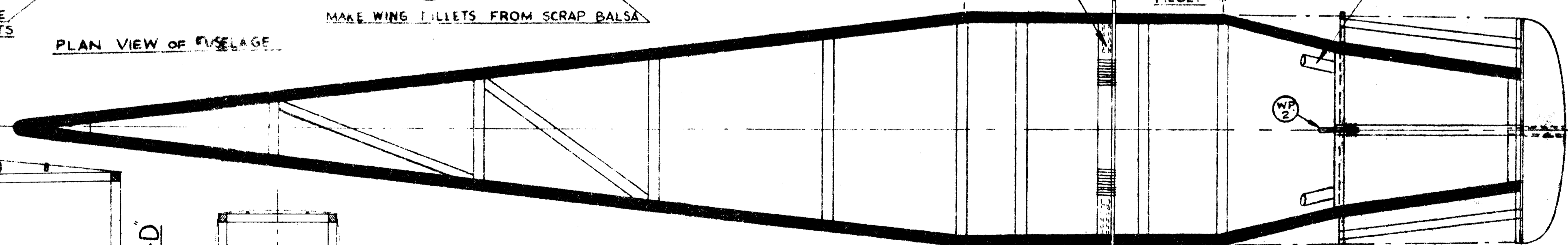
PLAN VIEW OF FUSELAGE

MAKE WING BULLETS FROM SCRAP Balsa

TUBING FOR 1/8" FITTING

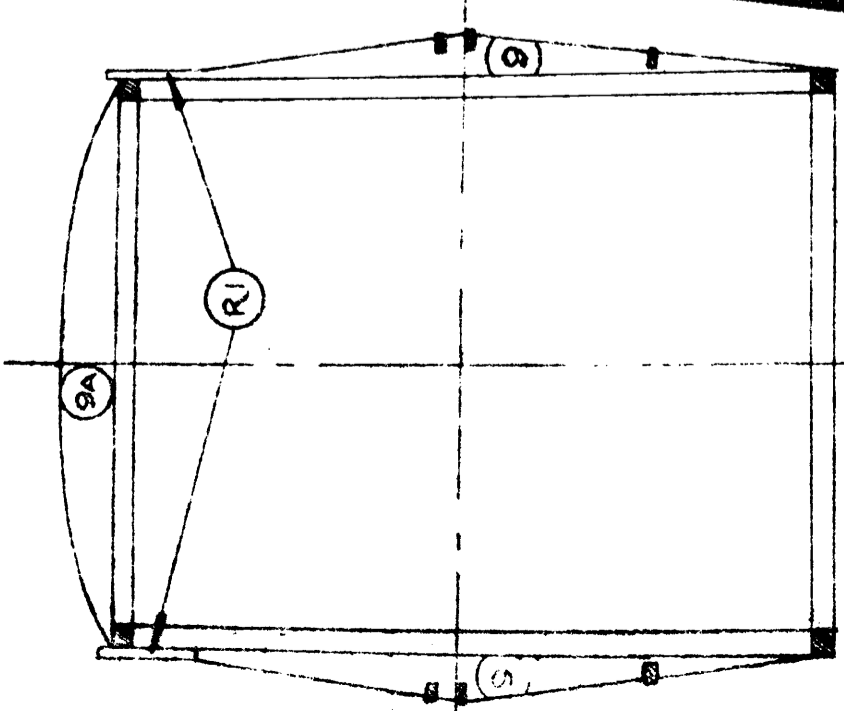
(WP 1) LIFT STRUT PICK UP BIND & CEMENT TO 3/16" x 1/2" OBECHI CROSS PIECE.

MAKE EXHAUST STUBS FROM SCRAP Balsa

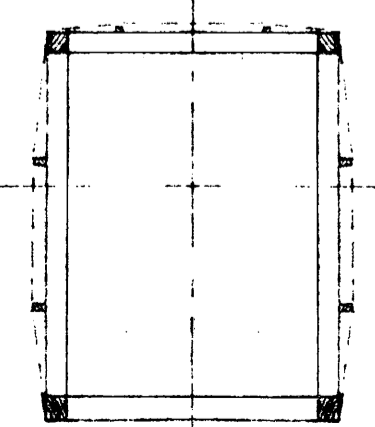


PLAN VIEW OF BOTTOM OF FUSELAGE.

PIN BOTTOM LONGERONS OF FUSELAGE TO PLAN BETWEEN PART MARKED THUS - * - WHEN ERECTING SAME

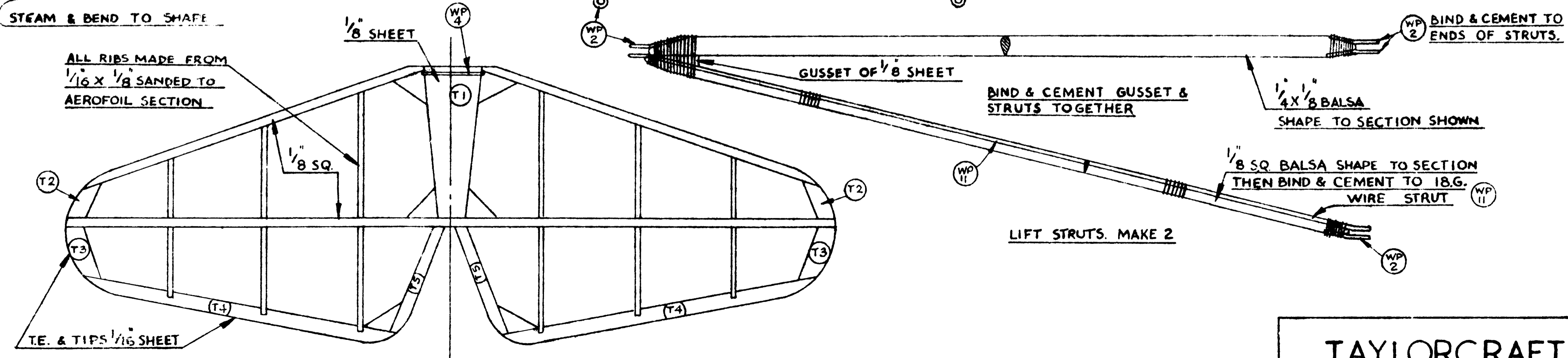
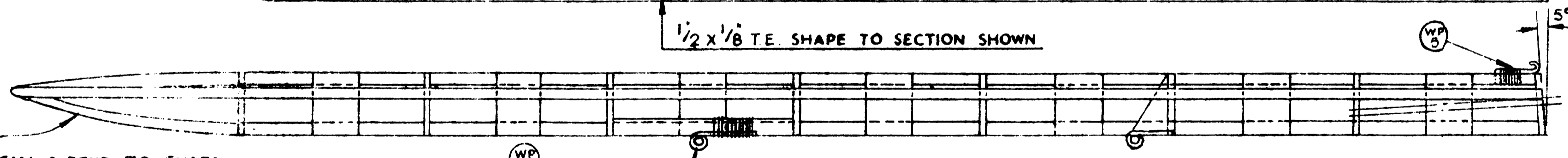
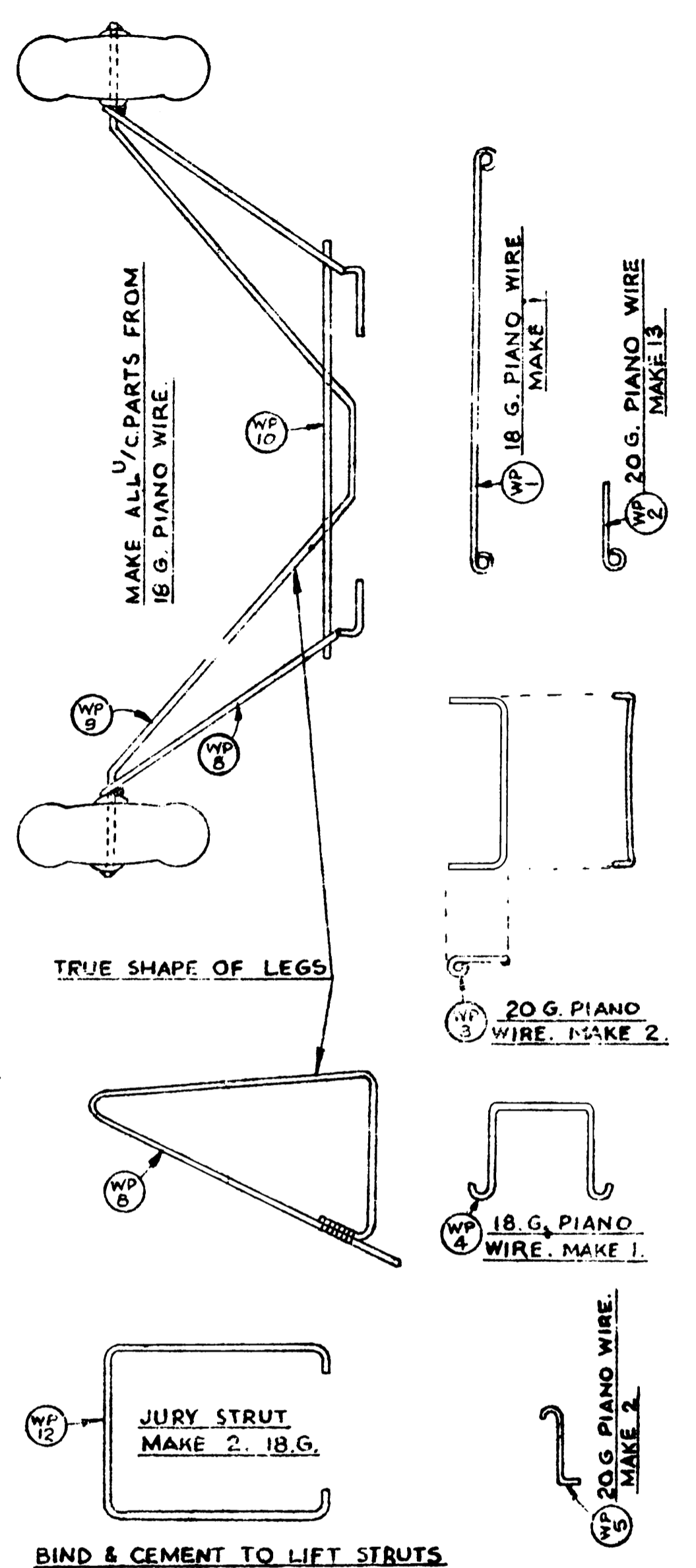
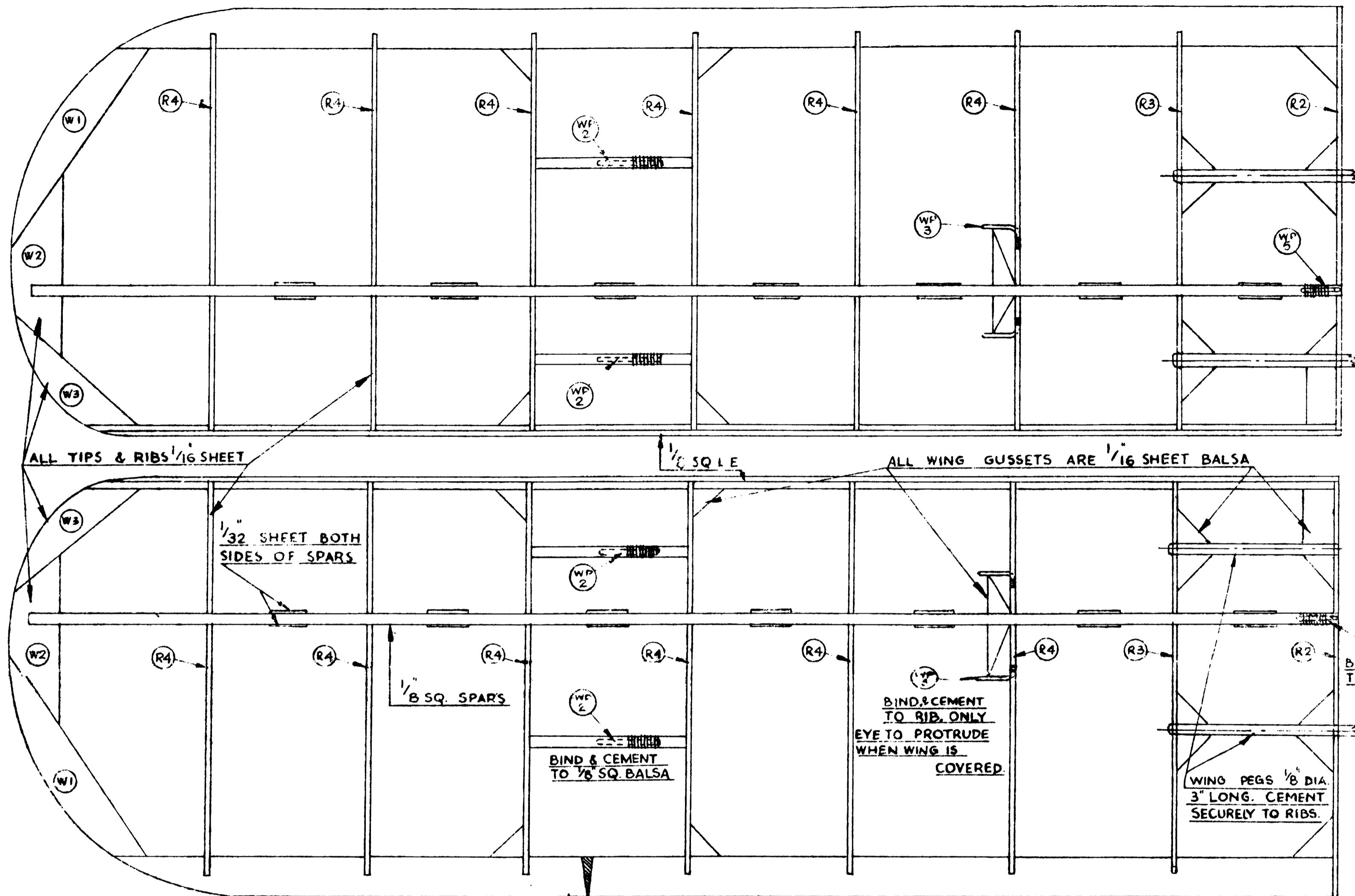


SECTION D-D



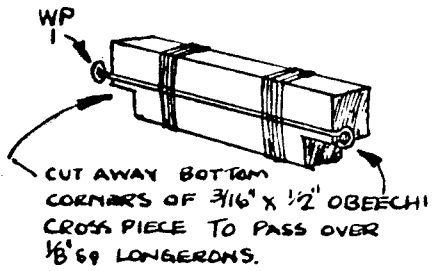
SECTION E-E

AEROMODEL FLYING SCALE
TAYLORCRAFT AUSTER MK.V.
 (Scale 1" to 1ft.)
 WING SPAN 36ins.

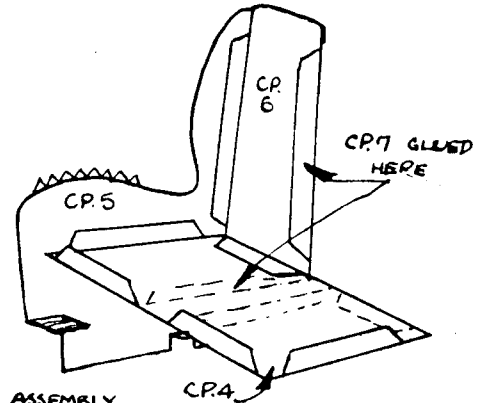
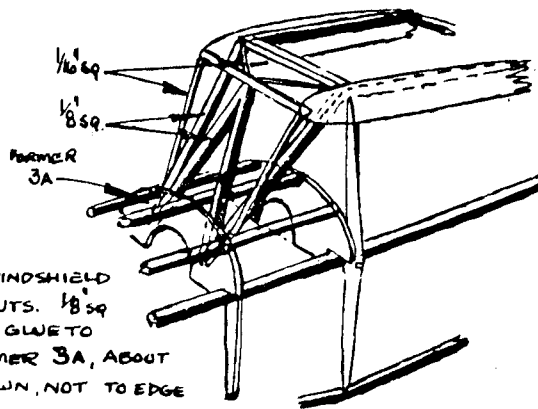


TAYLORCRAFT AUSTER MK.V.

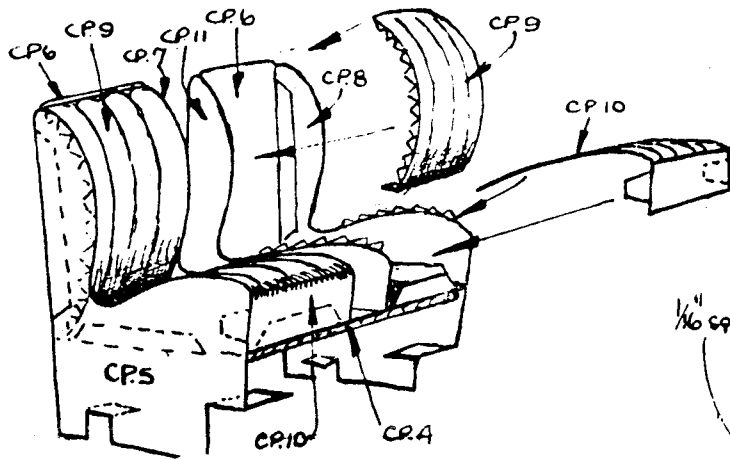
TAYLORCRAFT "AUSTER" MARK V



DETAILS OF WINDSHIELD SUPPORT STRUTS. $1/8"$ STRUT ENDS GLUED TO FACE OF FORMER 3A, ABOUT HALF WAY DOWN, NOT TO EDGE

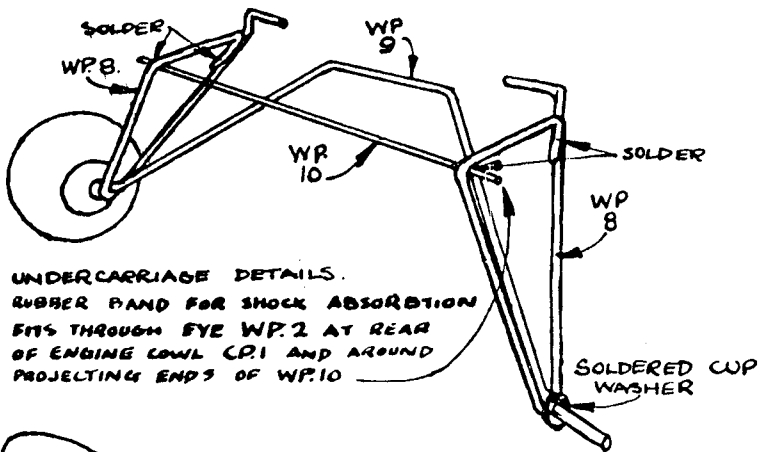
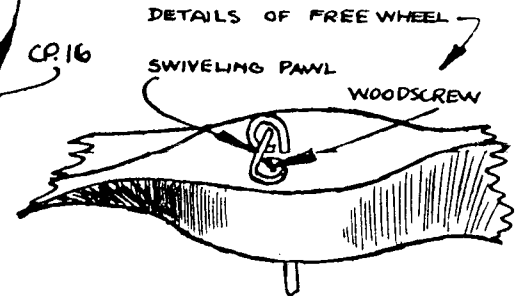
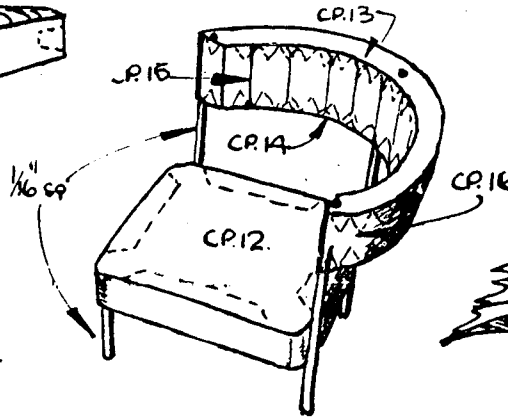


FIRST STAGE OF SEAT ASSEMBLY. CEMENT CP. 4 TO CP. 5. NEXT FIX CP. 6 TO BOTH, AS SHOWN ABOVE. NOW GLUE IN POSITION CP. 7 WHERE INDICATED. THE SEAT IS NOW READY TO RECEIVE CP. 9 AND CP. 10 WHICH ARE CEMENTED IN THAT ORDER. REPEAT THE PROCESS FOR SECOND SEAT. THIRD SEAT NEEDS NO FURTHER EXPLANATION THAN SKETCH BELOW.

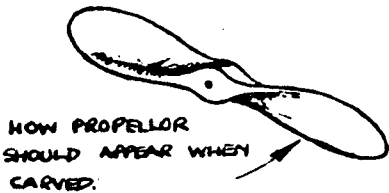
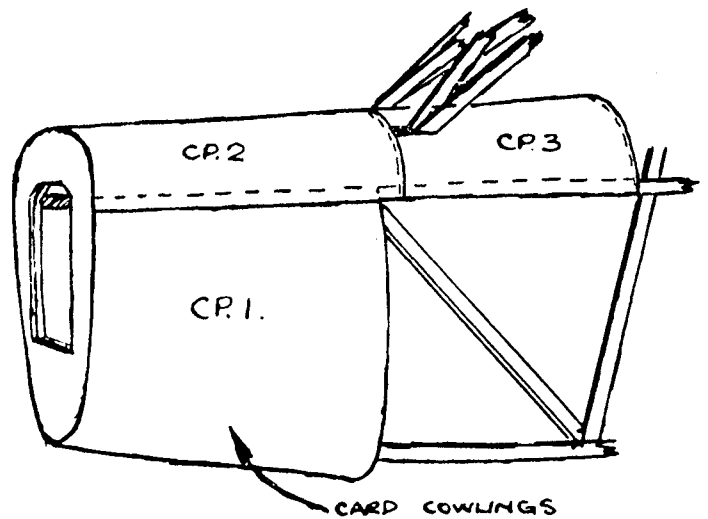


FINAL STAGES IN SEAT ASSEMBLY.

POSITION OF THIRD SEAT IN FUSELAGE IS IMMEDIATELY BEHIND RIGHT HAND (STARBOARD) SEAT, FACING ACROSS FUSELAGE



UNDERCARRIAGE DETAILS. RUBBER BAND FOR SHOCK ABSORPTION FITS THROUGH EYE WP. 2 AT REAR OF ENGINE COWL CP. 1 AND AROUND PROJECTING ENDS OF WP. 10



FLYING PROPELLOR PROFILE.

