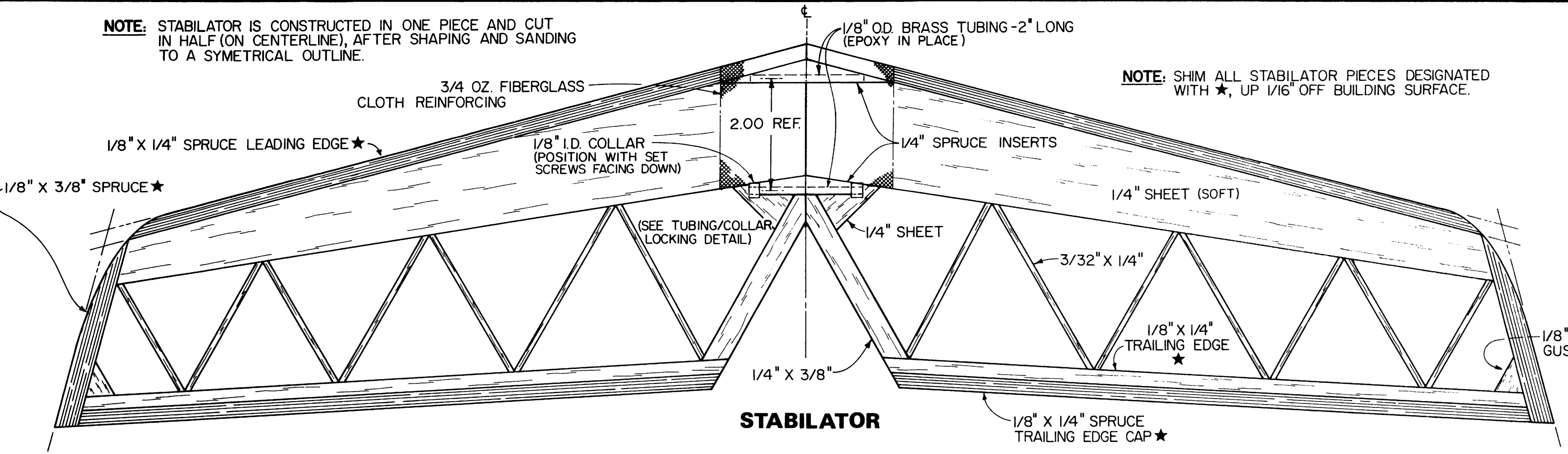
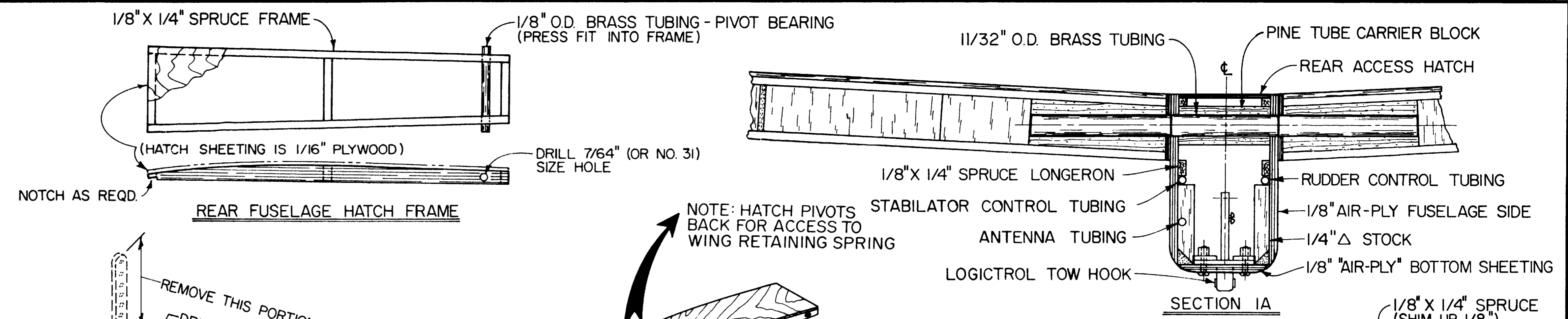


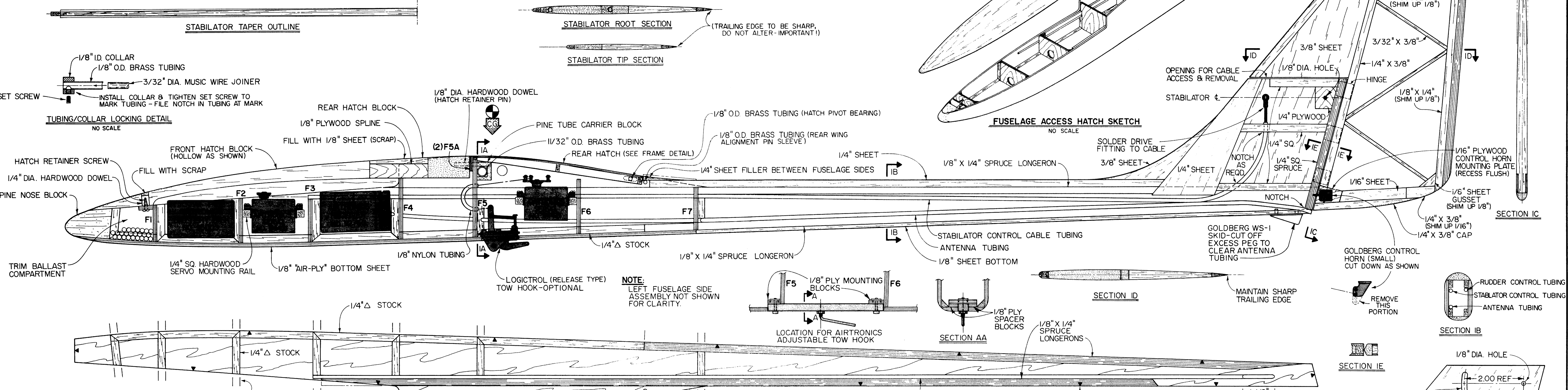
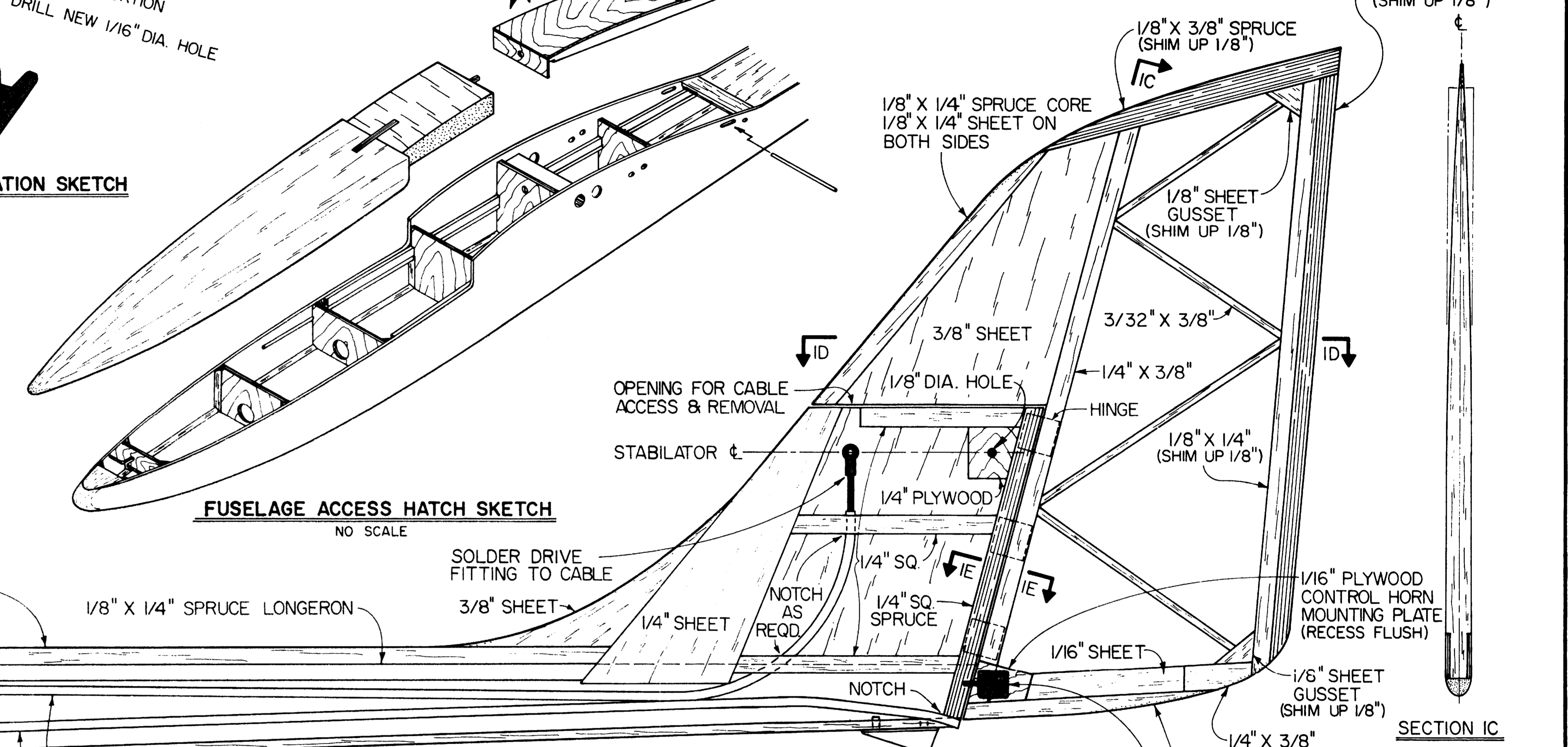
NOTE: STABILATOR IS CONSTRUCTED IN ONE PIECE AND CUT IN HALF (ON CENTERLINE), AFTER SHAPING AND SANDING TO A SYMETRICAL OUTLINE.



NOTE: SHIM ALL STABILATOR PIECES DESIGNATED WITH ★, UP 1/16" OFF BUILDING SURFACE.



TOW HOOK MODIFICATION SKETCH
NO SCALE



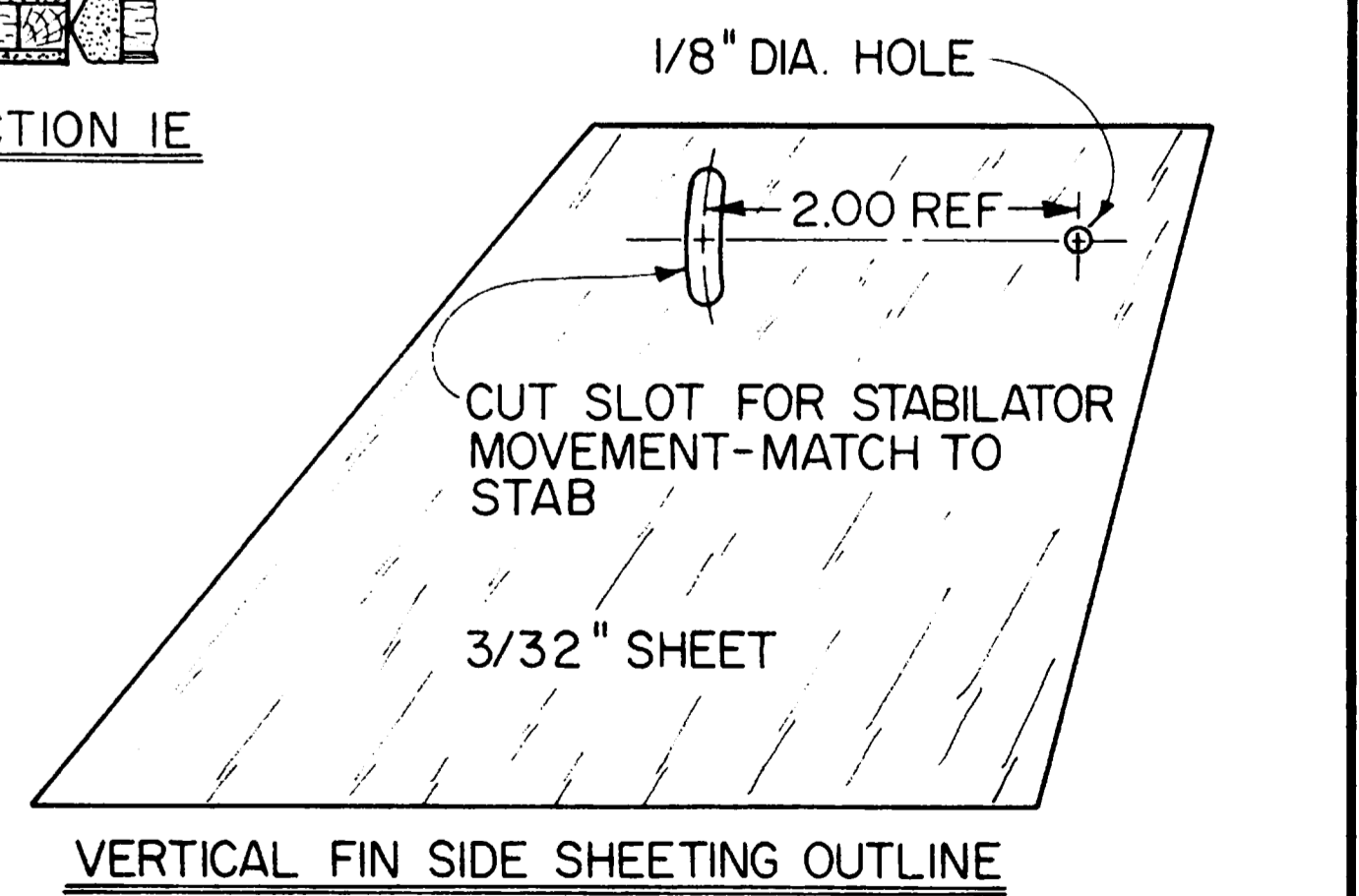
NOTE: LEFT FUSELAGE SIDE ASSEMBLY NOT SHOWN FOR CLARITY.

NOTE: ALL WOOD IS BALSA UNLESS NOTED OTHERWISE.

CONTROL SURFACE TRAVEL LIMITS
 RUDDER = 1 1/2" EACH DIRECTION (MEASURED AT TRAILING EDGE)
 STABILATOR = 3/8" TOTAL TRAVEL (MEASURED AT LEADING EDGE)
 SPOILERS = 90°

RUDDER & STABILATOR SERVO OUTPUT WHEEL MODIFICATION
NO SCALE

NOTE: THE TERM "AIR-PLY" REFERS TO LIGHT WEIGHT POPLAR PLYWOOD.

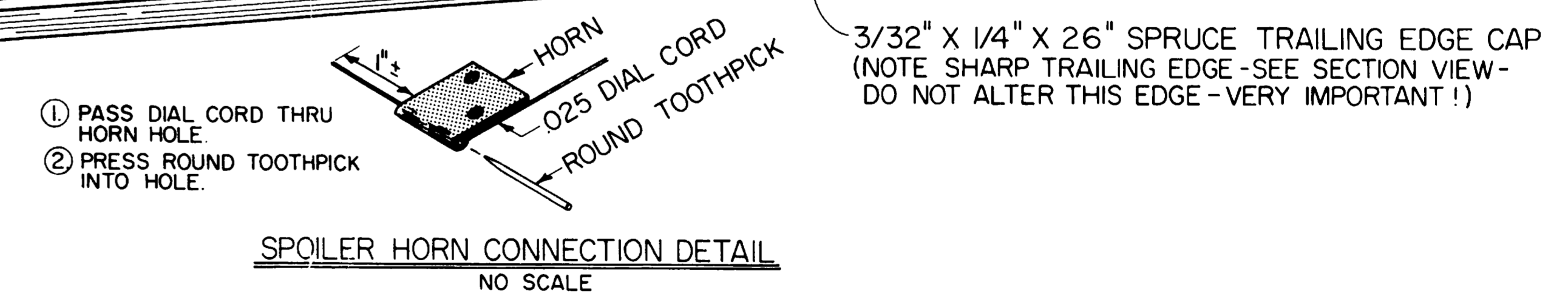
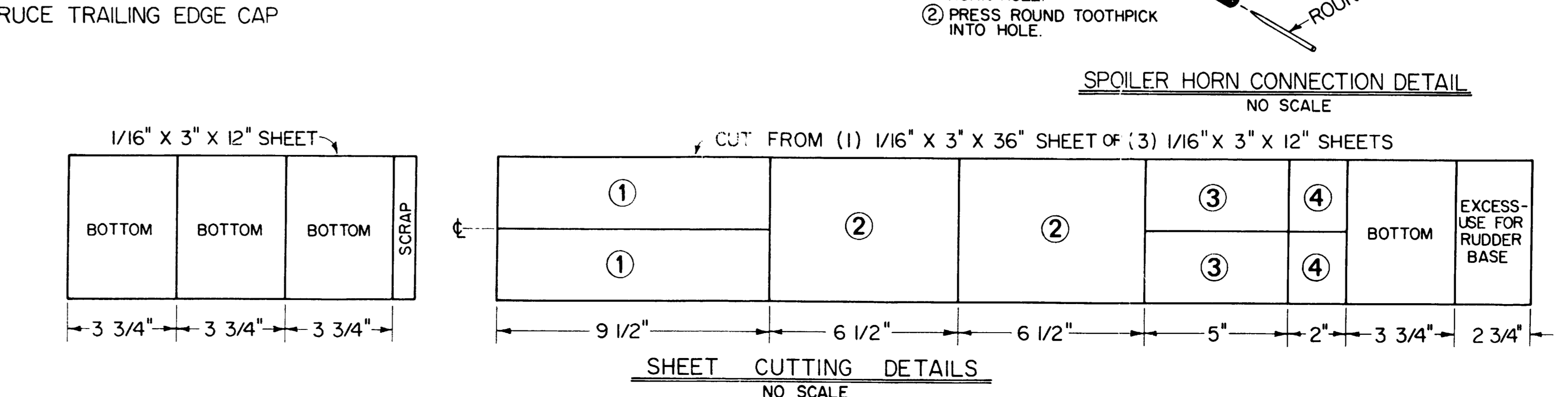
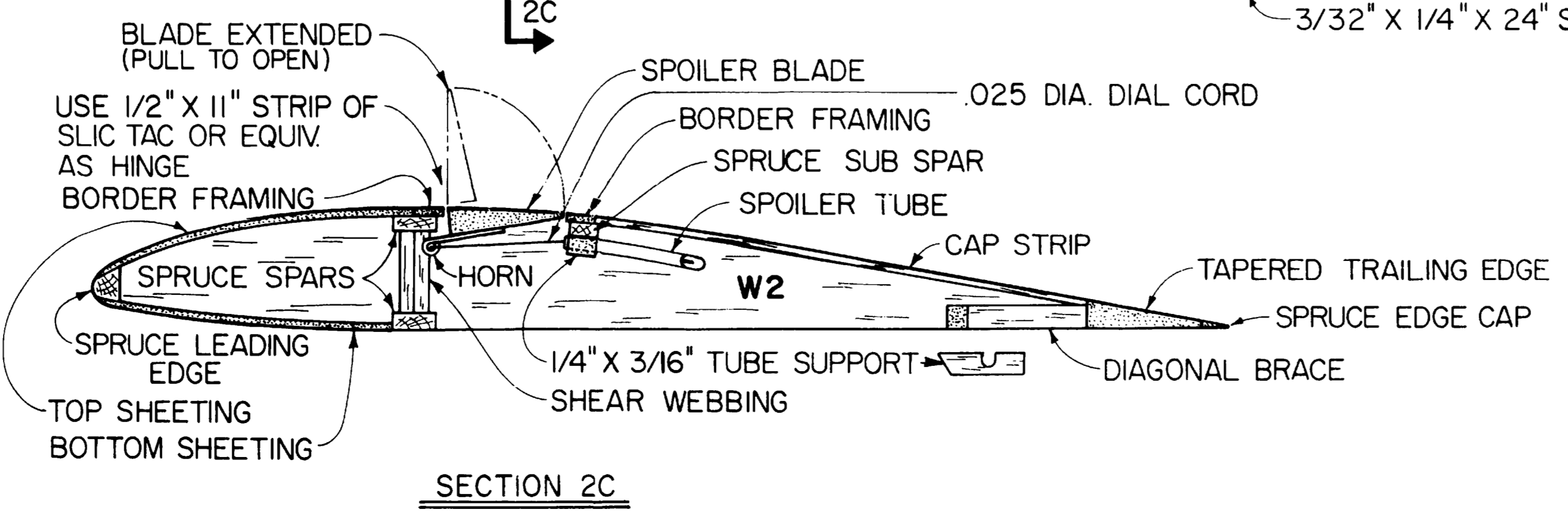
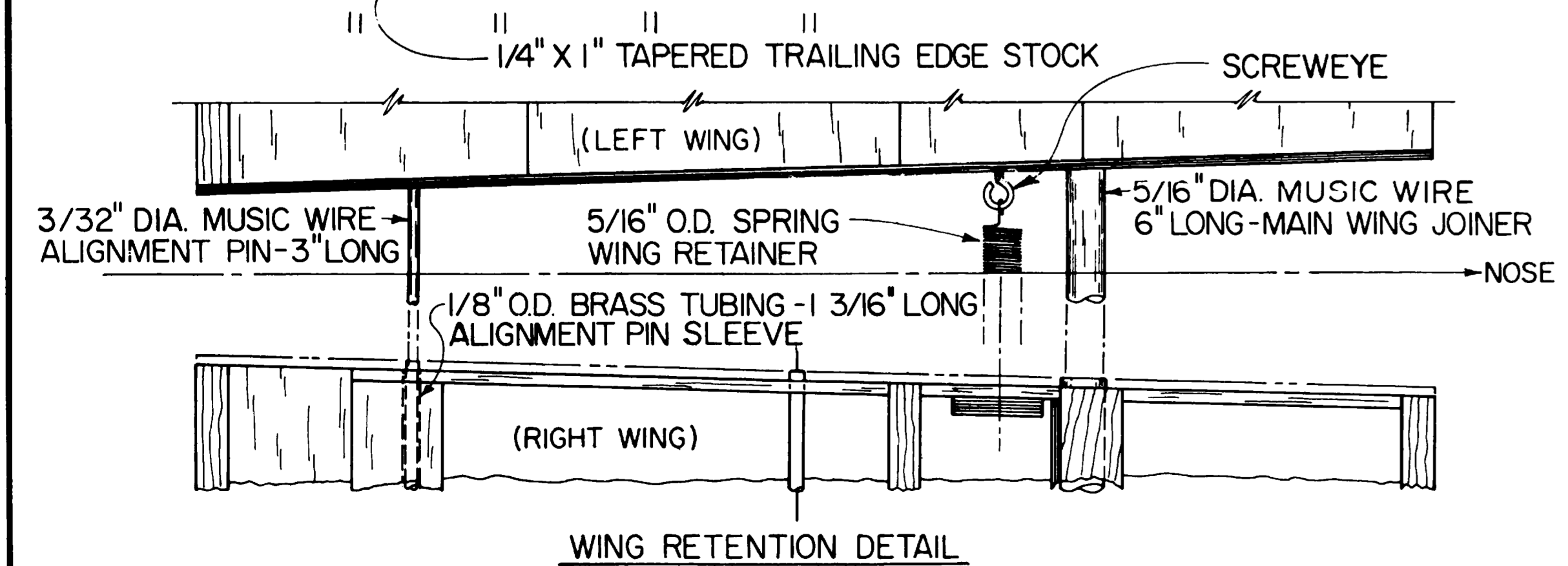
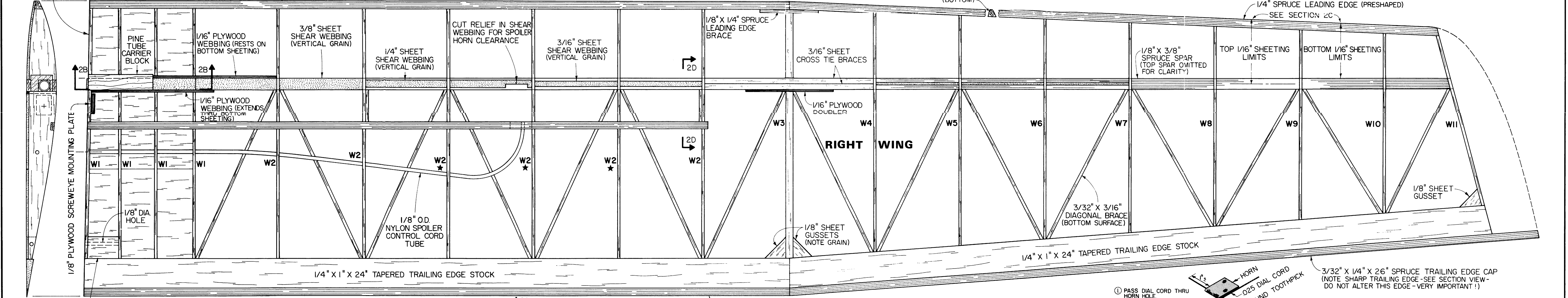
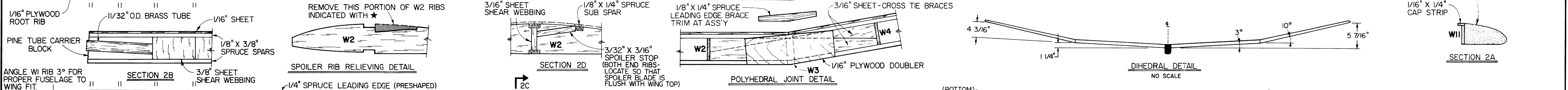
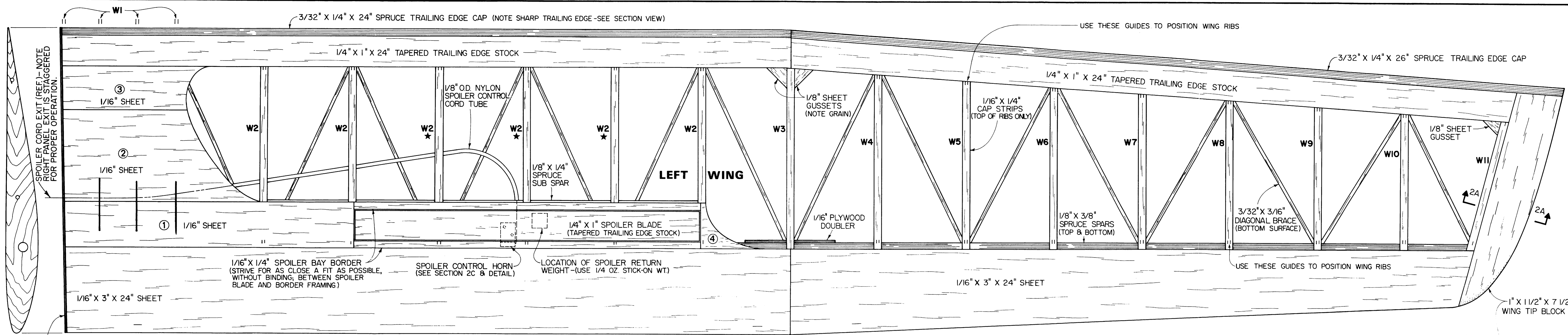


PLAN NO. 9211700

SAGITTA 900

DESIGNED BY LEE RENAUD | DRAWN BY TIM RENAUD | PLANS BY Bob Wallace

AIRTRONICS quality PLUS performance



PLAN NO. 92111701

SAGITTA 900

DESIGNED BY LEE RENAUD DRAWN BY TIM RENAUD PLANS BY Bob Wallace

AIRTRONICS quality PLUS performance