

FLIP - FLOP

Designed by
R. H. WARRING

4/-

Copyright of
The Aeromodeller Plans Service
 THE AERODROME, STANBRIDGE, NR LEIGHTON BUZZARD, BEDS

ALL WOODS UNLESS OTHERWISE STATED ARE BALSAL

- DATA -

SPAN	36 INS.
AREA	171 SQ. INS.
TAIL SPAN	19 INS.
TAIL AREA	72 SQ. INS.
LENGTH	3-13/16 OZS.
WEIGHT ALL UP	1-7/8 OZS.
MOTOR WEIGHT	

- MATERIALS REQUIRED -

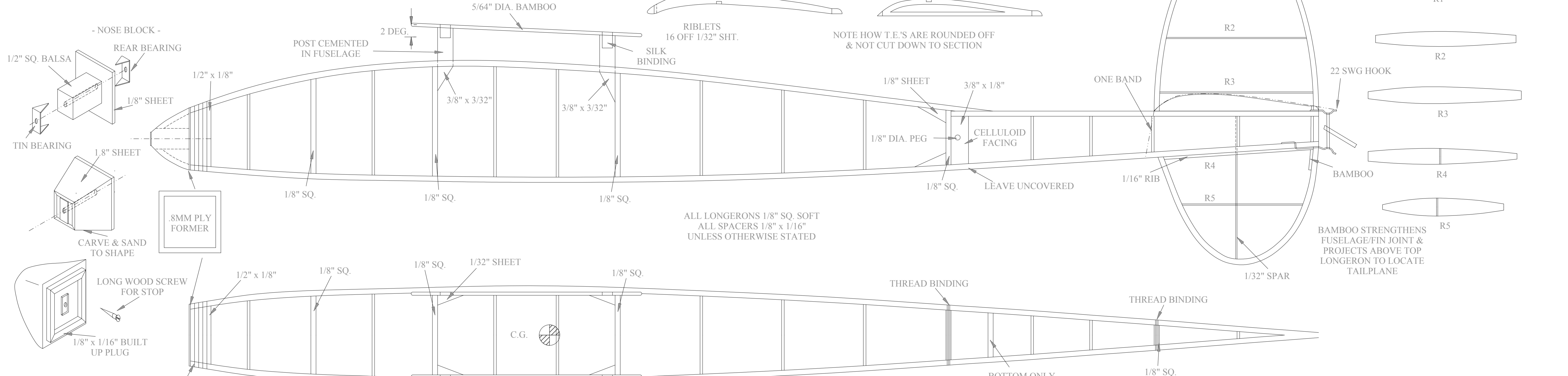
STRIP	BLOCK
STRIPS OF 1/8" x 1/8" MED. BALSAL	1 BLOCK OF SOFT BALSAL 7-1/2" x 1-3/4" x 1"
STRIPS OF 1/8" x 1/16" MED. BALSAL	
STRIPS OF 1/4" x 1/4" MED. BALSAL	MISC.
STRIPS OF 1/4" x 1/8" MED. BALSAL	6" OF 16 SWG PIANO WIRE
	9" OF 18 SWG PIANO WIRE
	4" OF 20 SWG PIANO WIRE
SHEET	SMALL PIECE OF 1/8" AND 3/32" SHEET
1 SHEET OF 1/32" x 3" MED. BALSAL	SMALL PIECE OF 3/32" DIA. DOWEL
1 SHEET OF 1/16" x 3" MED. BALSAL	

- WING RIBS -
 5 OFF 1/16" SOFT SHEET
 12 OFF 1/32" HARD SHEET

- TAIL RIBS -
 10 OFF 1/32" SHEET
 3 OFF 1/16" SOFT

FIN OUTLINE IS LAMINATED FROM 4 STRIPS OF 1/8" x 1/32" BALSAL. CEMENT FIN TO TAIL BEFORE COVERING

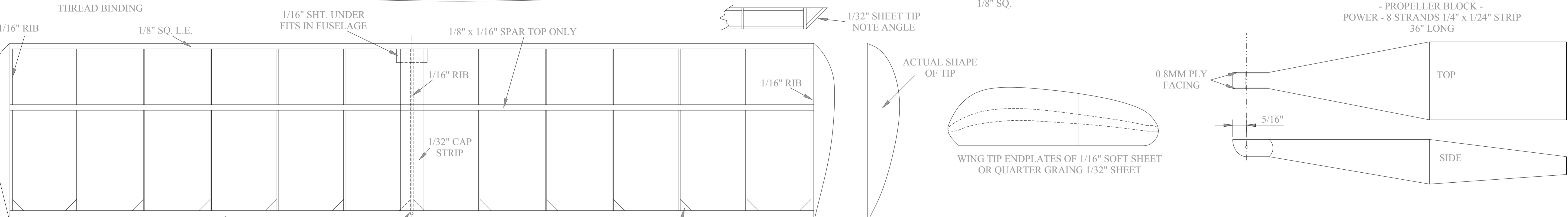
- FIN RIBS -
 CUT FROM 1/32" SHEET



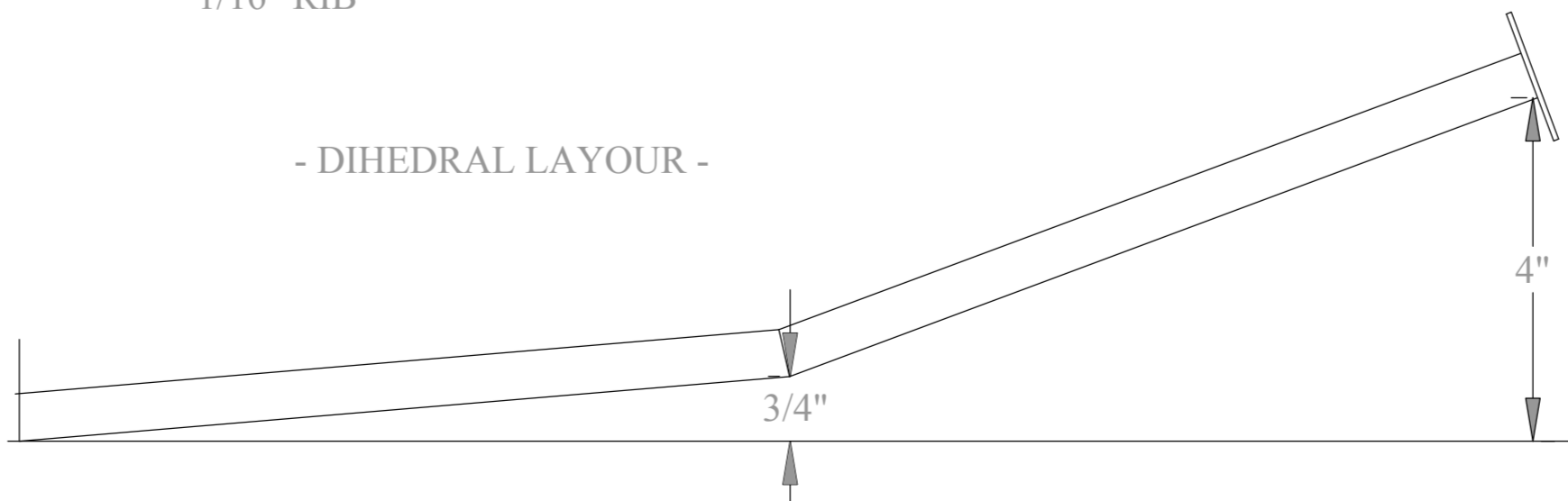
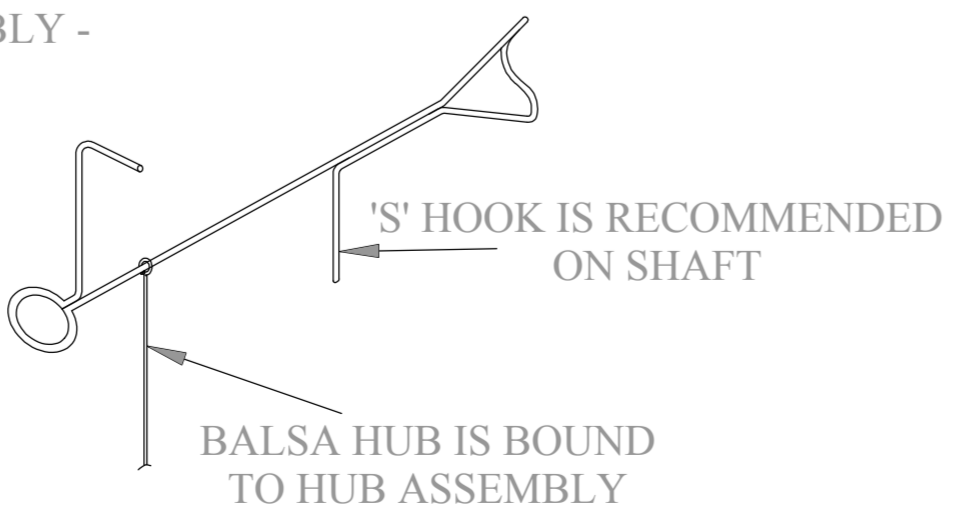
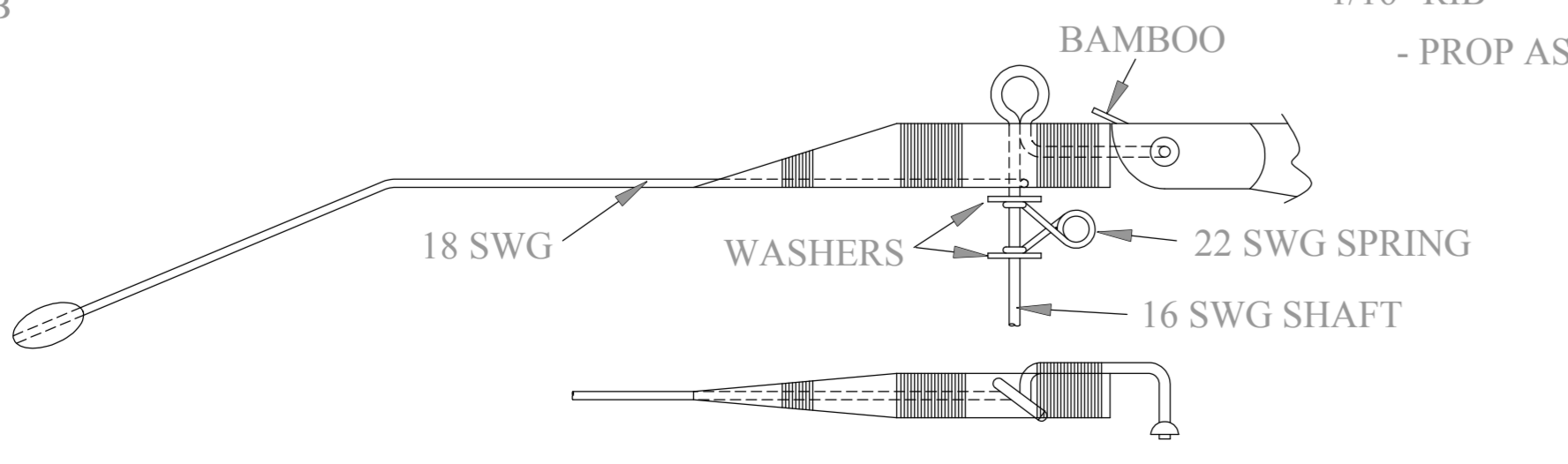
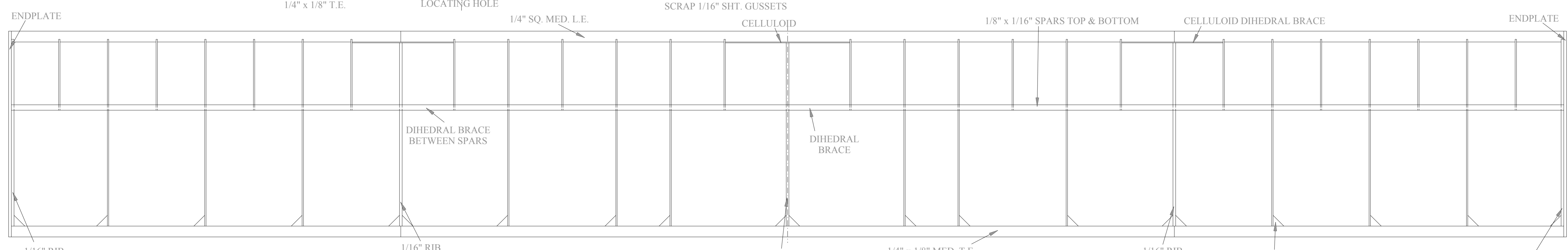
ALL LONGERONS 1/8" SQ. SOFT
 ALL SPACERS 1/8" x 1/16"

NOTE HOW T.E.'S ARE ROUNDED OFF & NOT CUT DOWN TO SECTION

BAMBOO STRENGTHENS FUSELAGE/FIN JOINT & PROJECTS ABOVE TOP LONGERON TO LOCATE TAILPLANE



- PROPELLER BLOCK -
 POWER - 8 STRANDS 1/4" x 1/24" STRIP
 36" LONG



CENTRE DIHEDRAL BRACE 1/8" SHT
 TIP DIHEDRAL BRACE 1/8" SHEET